

# CARMANSCAN VG 64

DIAGNOSTIC INNOVATION FOR PROFESSIONAL USERS



## FEATURES

### NEW GRAPHIC USER INTERFACE

- FASTER OPERATION SPEED
- USER FRIENDLY INTERFACE

### NEW LCD AND TOUCH SCREEN

- BRIGHTER SCREEN
- RESPOND WITH HIGH ACCURACY

### DIAGNOSIS ONLY WITH BATTERY (OBD I TYPE VEHICLE)

- NO NECESSITY TO CONNECT CIGAR JACK FOR COMMUNICATION

### UNDER DEVELOPMENT FUNCTIONS

- CAN WAVEFORM MEASUREMENT (10MHZ SAMPLING)
- DIAGNOSIS HISTORY MANAGEMENT PROGRAM
- ※ THIS WILL BE UPGRADED BY NEW PATCH FILE ON VG64

### 6 OR 8 CYLINDER DIS SYSTEM MEASUREMENT

- MEASUREMENT OF 6 OR 8 CYLINDERS WITHOUT EXTRA CONNECTOR
- ※ DLI IGNITION PICKUP IS REQUIRED FOR THE TEST. (OPTION PART)

### ULTIMATE VEHICLE COVERAGE

- KOR., JAP. (ASIAN TRUCK AND HEAVY VEHICLES)
- EURO., USA, AUSTRALIAN VEHICLE SUPPORT

### BATTERY LEAKAGE CURRENT : 300uA(ABOUT)

### LONG LIFE BATTERY / OPERATION SYSTEM : WINCE 5.0

### NOISELESS AUDIO DEVICE / CORE : GEODE LX800 - 500MHZ

### PC SCAN : AVAILABLE WITH PC

## SPECIFICATION

### HARDWARE

- SYSTEM : 512MB DD-RAM
- STORAGE MEDIUM : HDD 40GB
- DISPLAY : WIDE 7" COLOR LCD, TOUCH SCREEN, VGA OUT
- COMM. PORT : DLC PORT, HOST USB 1.1, USB 2.0, CLIENT LAN, RS-232
- BATTERY : PCM LI-ION BATTERY, OPERABLE FOR ABOUT 1 HOUR
- INTERNAL MEMORY : 64MB

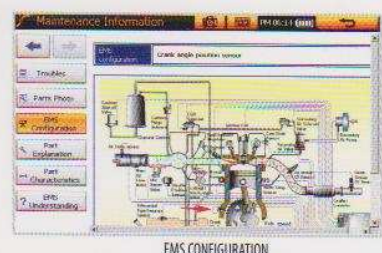
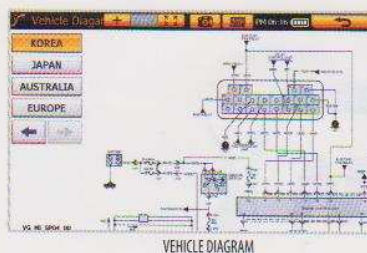
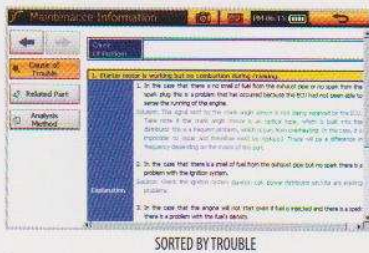
### PROTOCOL

- U J1850 (VPW, PWM)
- U CAN, J1587
- U SW CAM
- U KWP2000
- U CCD
- U HI-SPEED SERIAL
- U ISO 9141-2

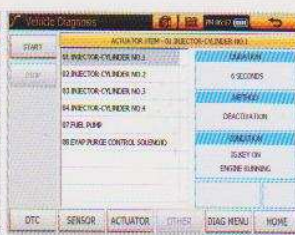
### SCOPE & METER

- **SCOPE SPEC.**
- 4-CHANNEL DIGITAL SCOPE
- VOLTAGE MEASUREMENT RANGE :  $\pm 500V$
- GROUND LEVEL ADJUSTMENT FUNCTION
- WAVEFORM STORAGE FUNCTION
- **METER SPEC.**
- 4-CHANNEL MULTI-METER
- VOLTAGE MEASUREMENT :  $\pm 500VDC$
- FREQUENCY MEASUREMENT : 0 ~ 200KHz
- DUTY MEASUREMENT : 0 ~ 100%
- RESISTANCE MEASUREMENT : 0 ~ 10M $\Omega$
- TEMPERATURE MEASUREMENT : -20 ~ 150 $^{\circ}C$
- PRESSURE MEASUREMENT : VACUUM - 100PSI
- PRESSURE - 200KPA

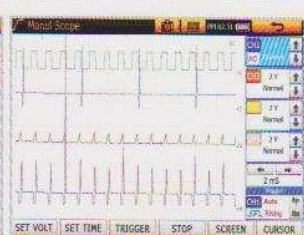
## SERVICE INFORMATION



## SCAN FUNCTION



## SCOPE & METER FUNCTION



SENSOR PRINT OUT (TEXT)

SENSOR DATA TEST	VALUE	UNIT	MIN	MAX	
BATTERY VOLTAGE	14.1	V	14.1	14.1	
VEHICLE SPEED SENSOR	0.0	KPH	0.0	0.0	
MASS AIR FLOW	632.4	kg/h	360.0	2402.0	
MASS AIR FLOW	930	kg/h	510	2050.0	
INT AIR TEMP SENS	76.6	Y	79.3	81.4	
ACCEL POSITION SENS	0.0	%	0.0	80.0	
Gas Andover ACCEL POSITION SENS 1	798.7	MM	688.3	1011.0	
ACCEL POSITION SENS 2	413.4	MM	0.0	894.4	
HELP	COOLANT TEMP. SENSOR	116.0	Y	108.4	116.0

